

TAZ SIDEKICK™



THANK YOU FOR CHOOSING LULZBOT®

→ **START HERE** ←

Unpacking Your LulzBot TAZ SideKick

**MADE IN
USA**

- A** With the box on a sturdy surface, carefully open the top of the box, marked “OPEN HERE”.



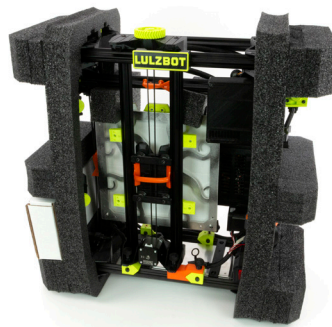
- B** Remove the accessory bags from the packing material and set aside for later use.



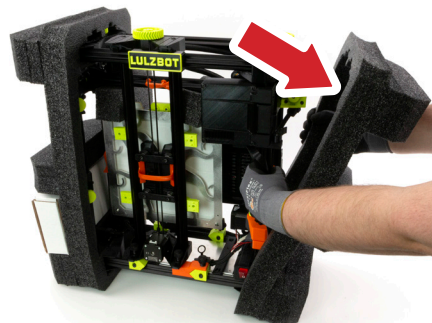
- C** Firmly grasp the printer frame, lift the printer and packing foam straight up and out of the box.



- D** Set the printer and packing foam upright on a sturdy surface.



- E** While supporting the printer frame with one hand, pull the packaging foam from both sides of the printer. Remove the accessory box from the lower foam pocket and set aside for later use.



- F** Set the unpacked printer upright on a sturdy surface.
You are now ready to begin the quick process to assemble your SideKick! Locate the **SideKick User Guide PDF** on the included SD card or download the most up-to-date version at: download.lulzbot.com/SideKick/Documents/SK_User_Guide.pdf



! RETAIN ALL PACKING MATERIALS.

In the case that warranty service is needed, the SideKick 3D printer **MUST** be shipped in its original packaging to ensure safe delivery. Keep **ALL** packing materials that came with your SideKick. The orange shipping mounts/clips, packing foam, and box.

Shipping the printer without using the original packaging can result in damage to the printer that is not covered by the warranty, see **Chapter 15, Warranty & Support.**

i **NOTE:** The color and appearance of some components may vary depending on the configuration of your SideKick.

! IF YOUR SIDEKICK IS DAMAGED OR IS NOT WORKING PROPERLY, DO NOT RETURN TO THE STORE OR RETAILER.

If you have an issue with your printer or with the performance of this product please contact LulzBot at:

Web: LulzBot.com/Support
Email: Support@LulzBot.com
Phone: +1-701-809-0800

i For more details on quick assembly and other printer information, locate the **SideKick Users Guide PDF** on the included SD card or download the PDF at: http://download.lulzbot.com/SideKick/Documents/SK_User_Guide.pdf

i The standard tool kit or optional deluxe tool kit will be located in the accessories box with the filament guide tube.

i Before beginning the simple assembly process, take a moment to familiarize yourself with the key components of your new SideKick 3D printer in **Chapter 2, Meet Your Sidekick.**

Questions? Contact Customer Support at Support@LulzBot.com or call **1-701-809-0800 ext 2**



www.LulzBot.com

UNPACKING INSTRUCTIONS

v.1.07-08-21

TAZ SIDEKICK

Simple Set Up Guide - 10 steps from box to print!

This Simple Set Up Guide will walk more experienced users through 10 easy steps to prepare the TAZ SideKick for printing. Every step includes a reference to the chapter in the PDF User Guide that contains more detailed instructions on each process. New users can find more detailed instructions beginning in **Unpacking**, **Chapter 5** of the User Guide. If you're still stuck after referring to the detailed steps in the user guide, check out the **Troubleshooting** section in **Chapter 14**. If you don't find the answers in the troubleshooting section, contact LulzBot support at **Support@LulzBot.com** to talk to a friendly LulzBot Customer Support Team Member. The most current version of the Users Guide PDF can be downloaded at **download.lulzbot.com/SideKick/Documents/SK_User_Guide.pdf**.

01 **Unpack** - Remove your SideKick from the packaging material and remove all of the orange shipping blocks and clips from the printer.



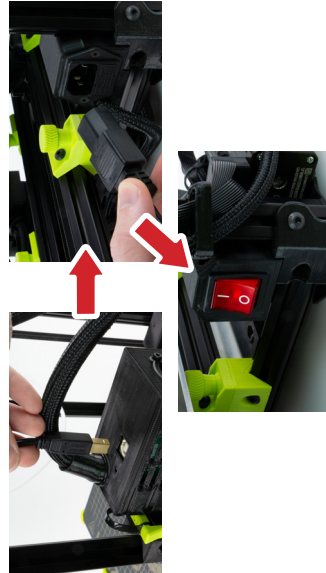
For more details, see **Chapter 5, Unpacking**.

02 **Assembly** - Mount the Y-Axis to the printer frame. Swing out and secure the electronics enclosure and LCD control panel (if equipped) and mount the Tool Head. Open the spool mount and connect the filament guide tube.



For more details, see **Chapter 7, Assembly**.

06 **Connect Printer** - Plug the USB cable into your computer and the top of the electronics enclosure on the back of the printer. Plug in the AC power cable at the back of the printer and plug it in to an AC outlet. Turn the printer on using the red power switch on the lower right front of the printer.



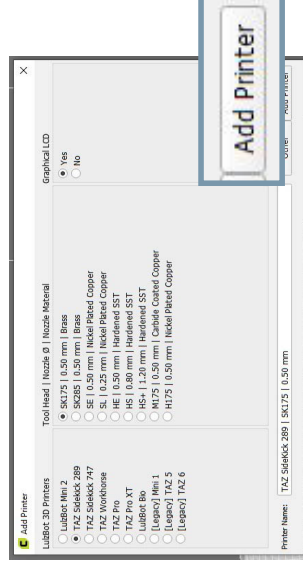
For more details, see **Chapter 9, Preparing to Print**.

03 **Slicer Installation** - Install Cura LulzBot Edition on your desktop computer following the installation prompts. Cura LE is included on the SD card that came with your SideKick. The most current version of Cura LE can be downloaded from **www.LulzBot.com/cura**.



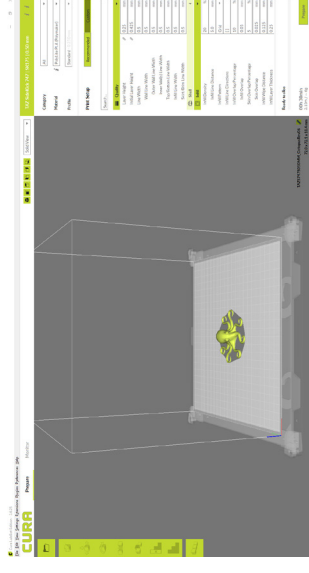
For more details, see **Chapter 8, Slicer Installation**.

04 **Add Printer** - Launch Cura LE. Go to **Settings>Printer>Add Printer**. Select the LulzBot TAZ SideKick model and select the Tool Head installed on your printer. Click **Add Printer**. Click **Finish** on the next menu. Cura LE is now ready for use with your LulzBot TAZ SideKick.



For more details, see **Chapter 8, Slicer Installation**.

05 **Load File to Print** - Load your first file from the included SD card. Select **Open File** in Cura LE and choose **OctopusRev06.stl** from the included SD card. In the **Prepare** sidebar in Cura LE confirm that **PolyLite PLA** is selected for material and **Standard** is selected for the profile.



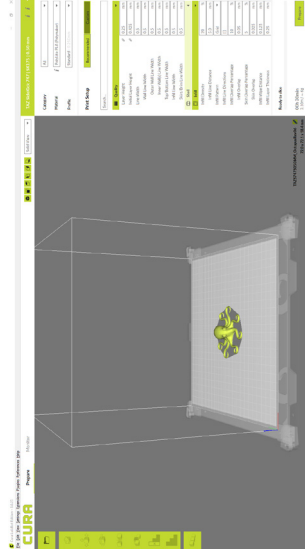
For more details, see **Chapter 8, Slicer Installation**.

07 **Load Filament** - Load the included PLA sample of filament. Ensure the filament is the correct diameter (1.75mm or 2.85mm) for the Tool Head you have installed on your SideKick.



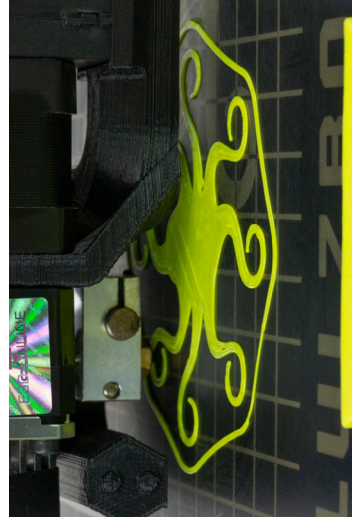
For more details, see **Chapter 9, Preparing to Print**.

08 **Start Print** - In Cura LE, click the **Monitor** button. Click **Connect**. Click **Start Print**. Your TAZ SideKick will automatically prepare itself for 3D printing.



For more details, see **Chapter 10, Starting Your First Print**.

09 **Check Level and Z Offset** - Before each print, your SideKick will conduct a bed-leveling sequence. Check for correct Z-offset. Using the LCD screen (if equipped) Go to **Configuration>Advanced Settings>Z Offset**. Adjust the Z-offset to achieve optimal bed adhesion.



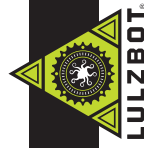
For more details, see **Chapter 10, Starting Your First Print**.

10 **Print Part** - Your SideKick will now print your part. When the part is complete, the printer will move the bed to rear of the machine to cool. Once the print bed is cool, it will move the print bed to the front. You can then remove your print.



For more details, see **Chapter 10, Starting Your First Print**.

Questions? Contact Customer Support at **Support@LulzBot.com** or call **1-701-809-0800 ext 2**



www.LulzBot.com

SIMPLE SET UP GUIDE